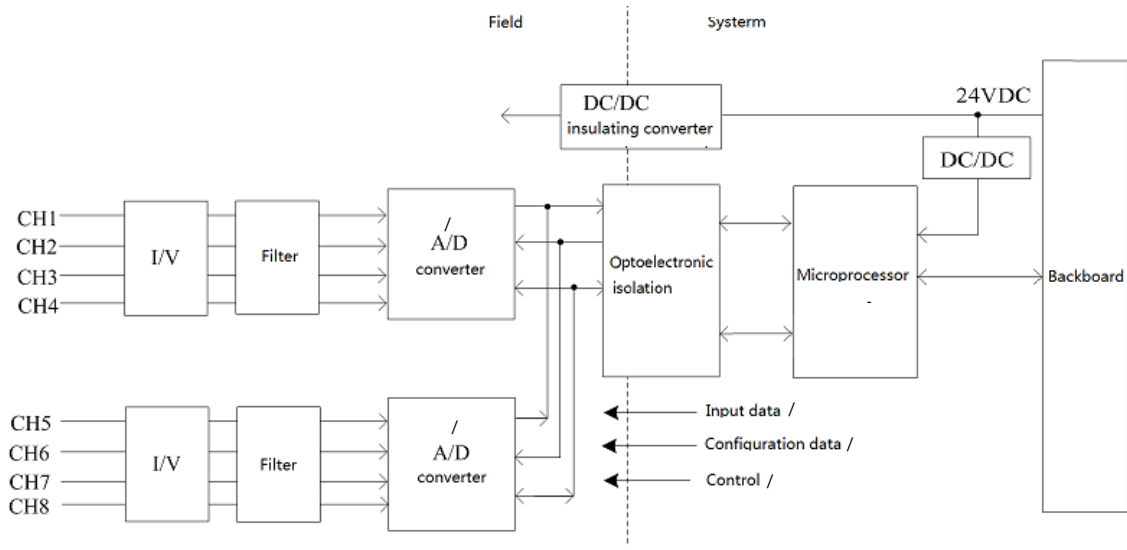


# LK411 8-

- 8-
- : 0 ~ 20 / 4 ~ 20
- : 0 ~ 20,58 / 4 ~ 20,58
- 
- 
- 
- 
- 
- 
- 

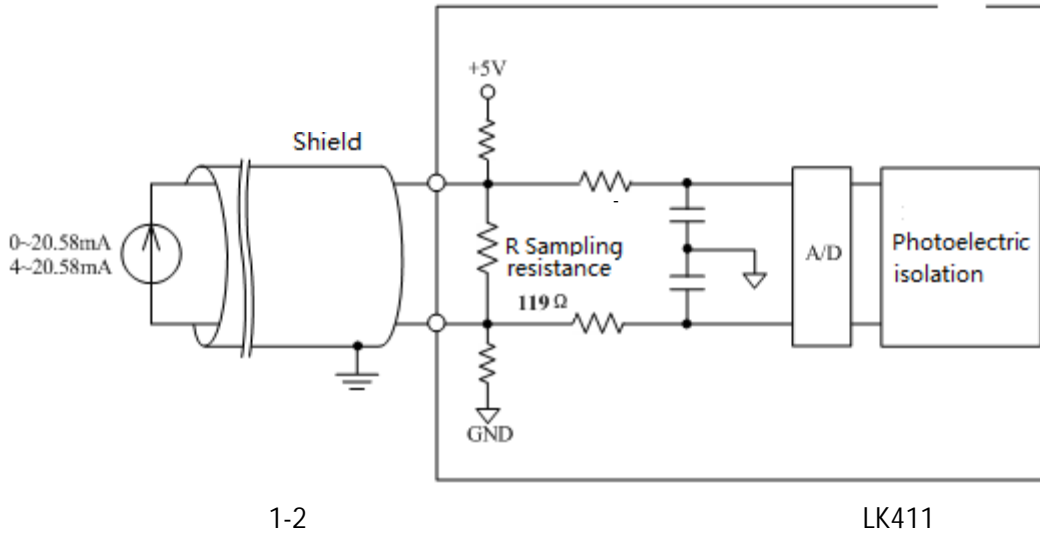


24 5 1-1 - LK411 LK411 Backboard

! (Error!

Reference source not found.)2,

DP ( ).



LK411 8-		
	20,4 ~27,6	
	60	24
	8	
	70	71
	0-20.58	4-20.58
	0x0000~0xFFFF	0x0000~0xFFFF
	16-	
( )	<480 ( )	
	243 Ω	
	90%	
	80	
	100	
	<0,1% F.S. 25°	
	<0,03% F.S. 25°	
	12	
	±25 ppm/°C	
	500	1 : 5

LK411 8-	
	/ 0xA3/0xA2
	/ 0xA7/0xA8
	0x06; 0xA0
	A1
	LK
	x x = 35 x 100 x 100
	IEC60529 IP20
	190
	0°C~60°C
	5%~95%,
	-40°C~70°C
	5%~95%,